

Building Details

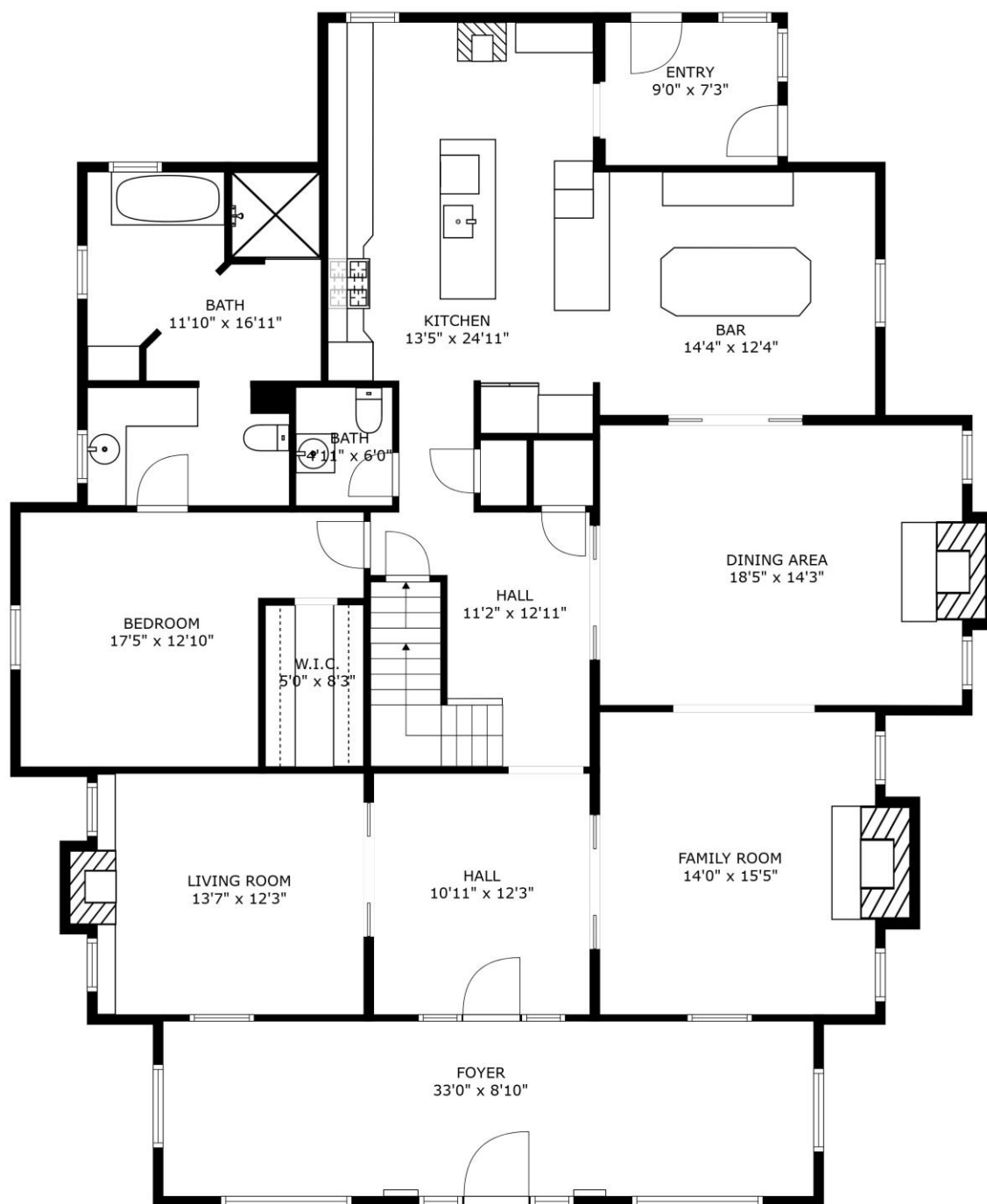
5445 Wild Lane

Mansion House

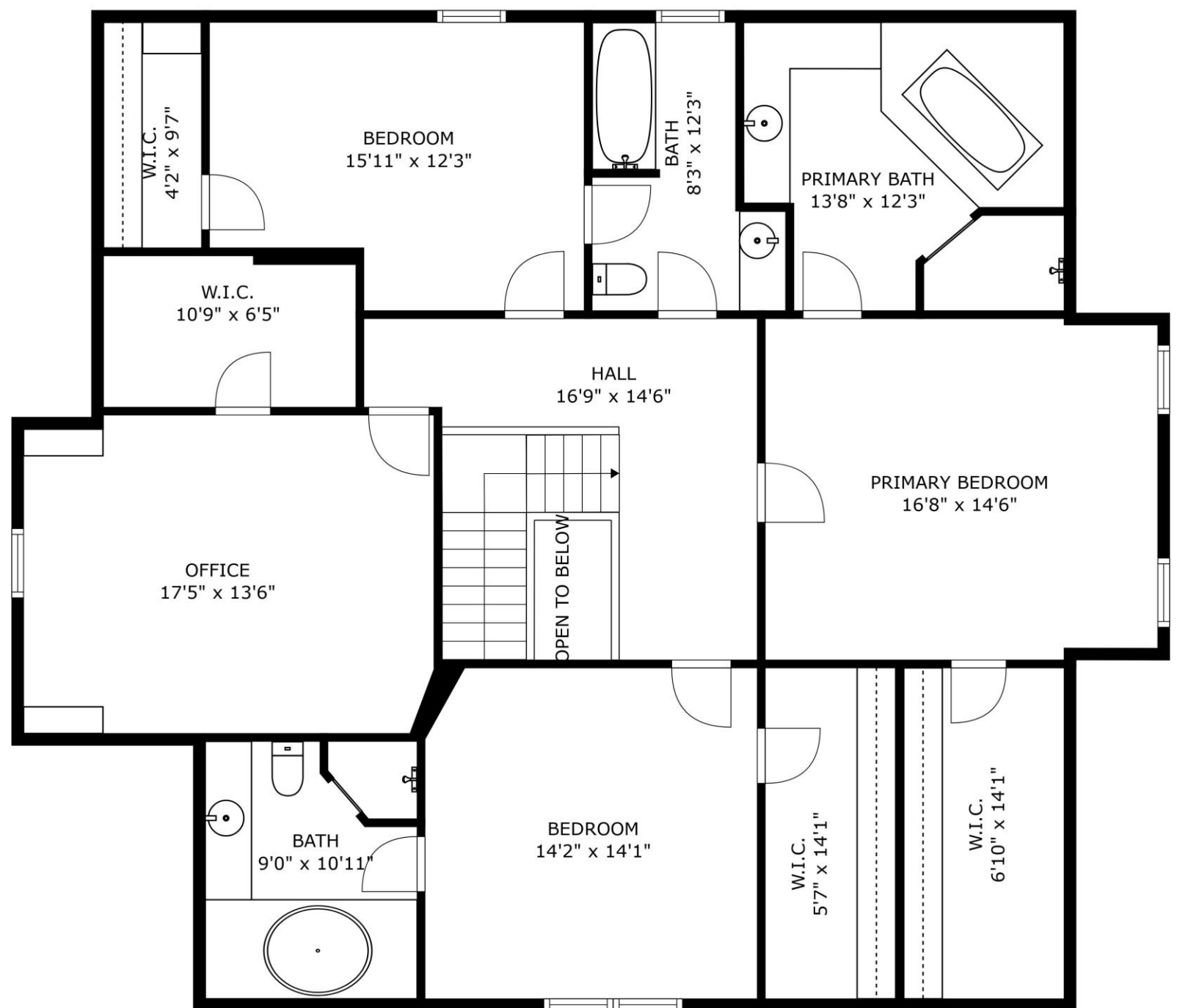
- Currently used as private residence
- Built in 1905 by Alfred Wild
- 6,519 sq ft, 4,381 above grade
- 5 bed, 5 ½ bath
- Primary suite on main level
- 4 bedrooms on upper level
- Kitchen recently opened up into bar and dining rooms
- Previously Bed & Breakfast



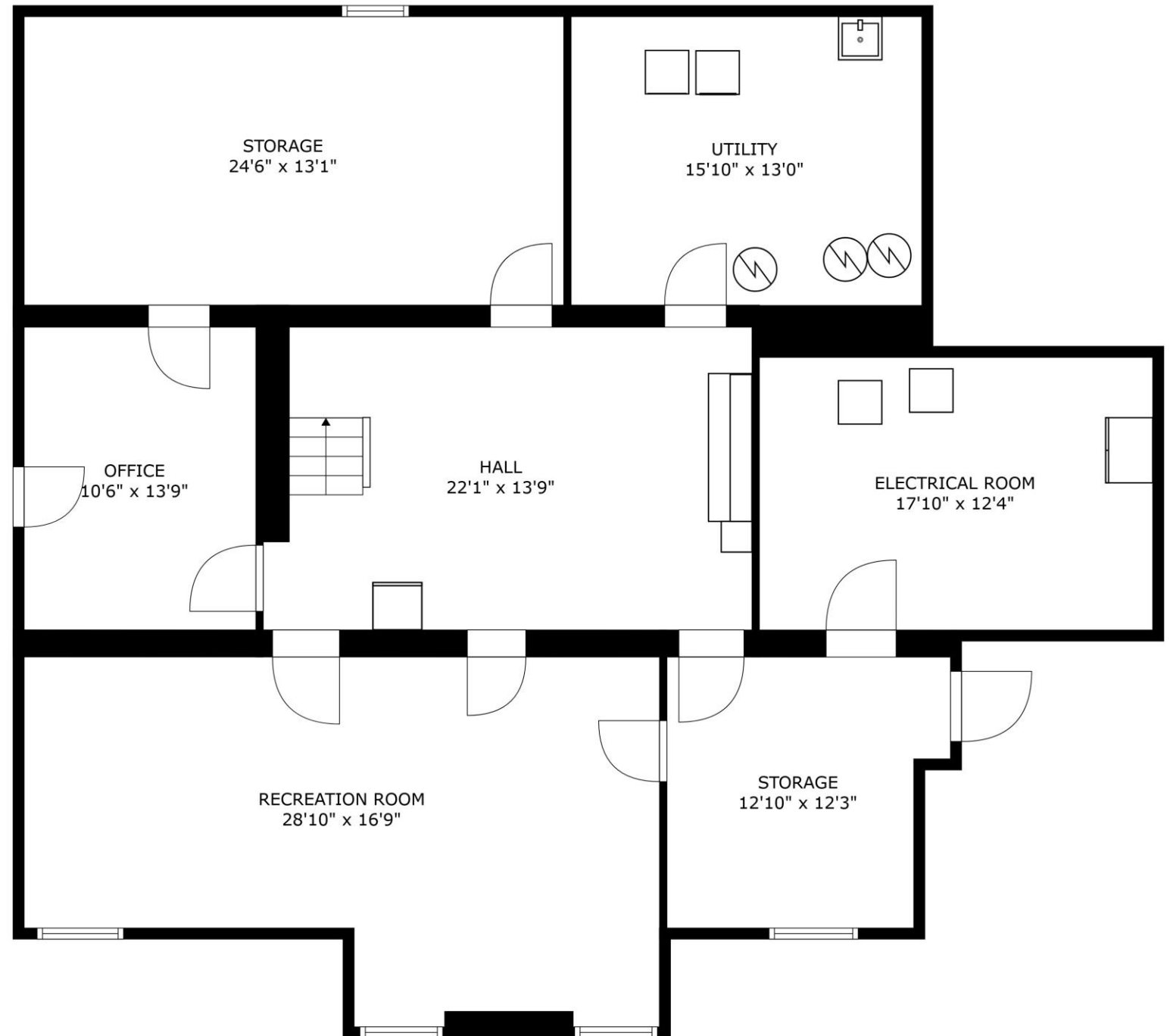
Main Level Mansion



Upper Level Mansion



Lower Level Mansion

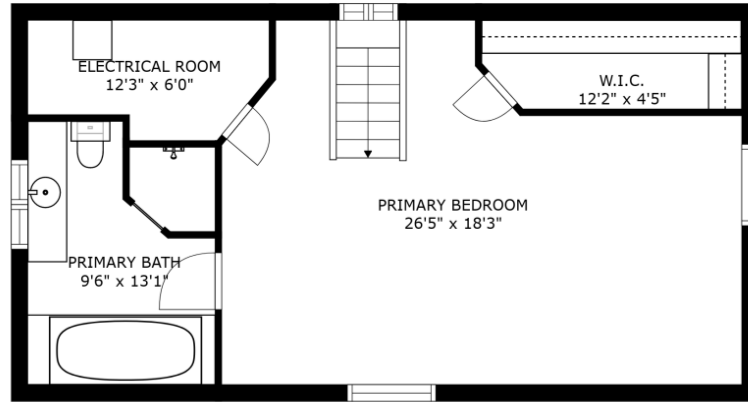


Carriage House

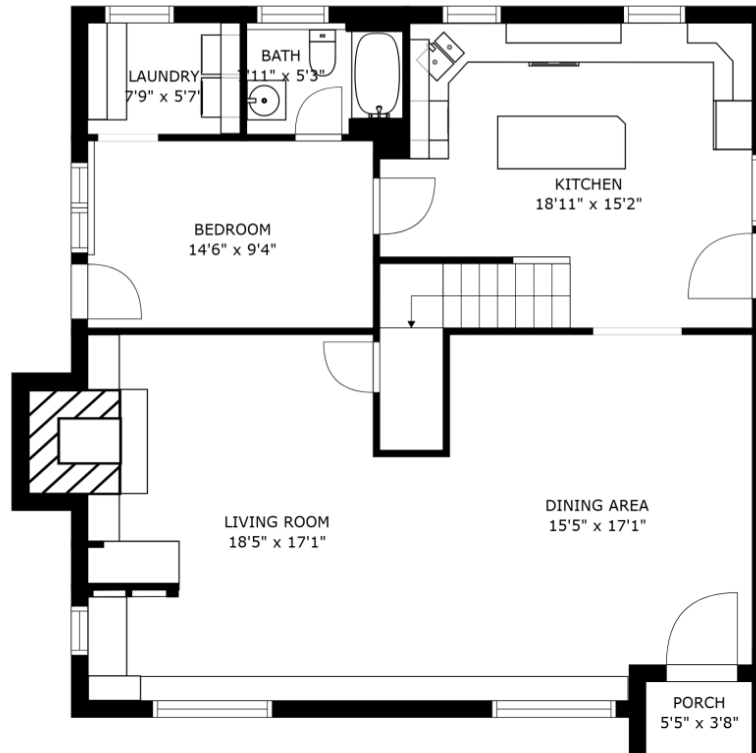
- Recognized residence
- Built in 1905, remodeled 1998
- 1,994 sq ft, 2 floors
- 2 bed, 2 bath



Floor Plan of Carriage House



FLOOR 2

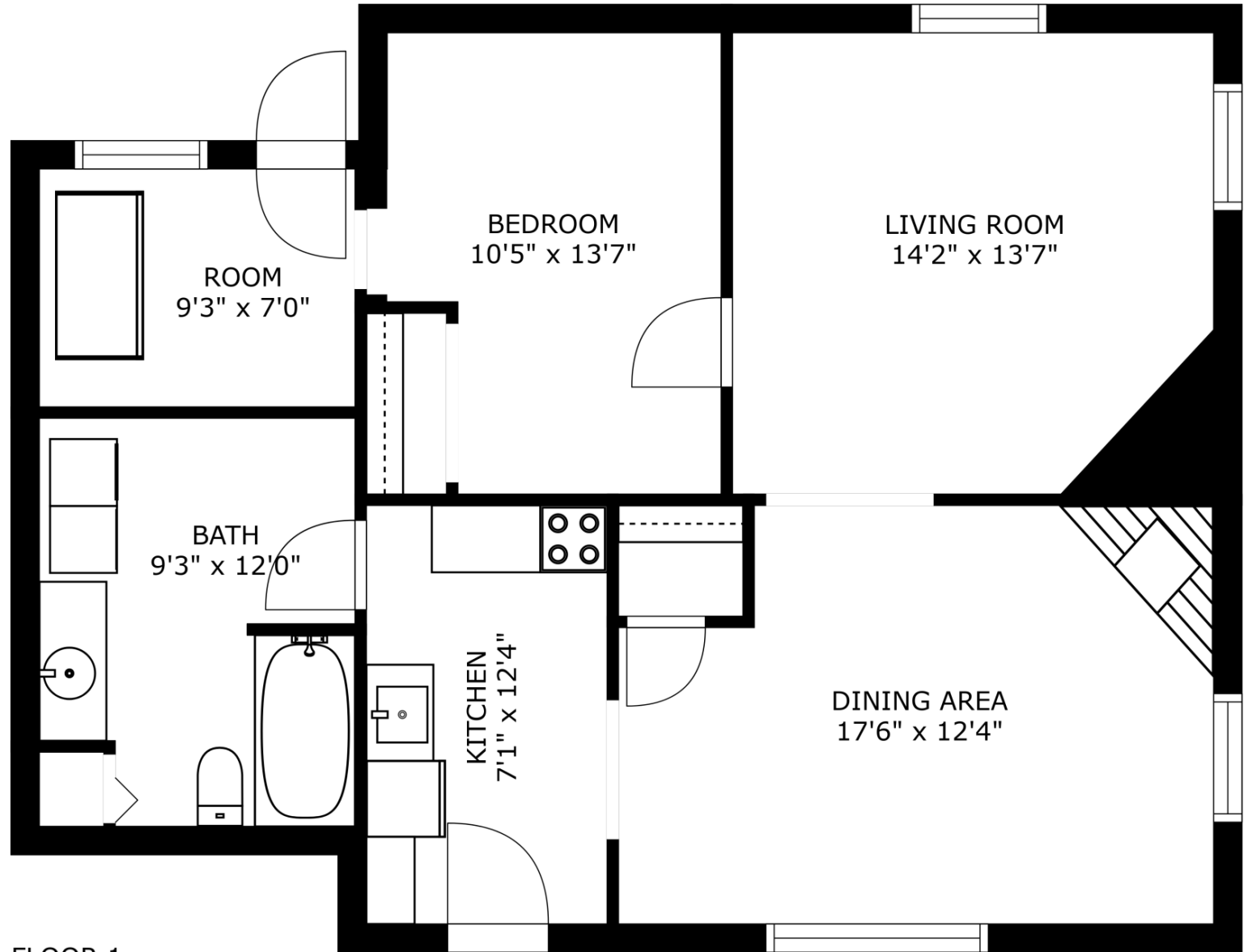


Brick House

- Recognized Residence
- Built in 1925, remodeled in 1984
- 928 sq ft
- 2 bed, 1 bath
- Separate septic
- Separate utilities
- Private access



Floor Plan of Brick House



FLOOR 1

Northwest Garage

- Framed with brick veneer
- Built in 2001 to function as an Art Center, then converted into apartments
- 2,040 sq ft
- 2 garage bays
- 2 separate apartments with private driveway



Northwest Garage Apartments

Apartment 1

- 2 bed, 1 bath
- 1-car attached garage
- Patio space

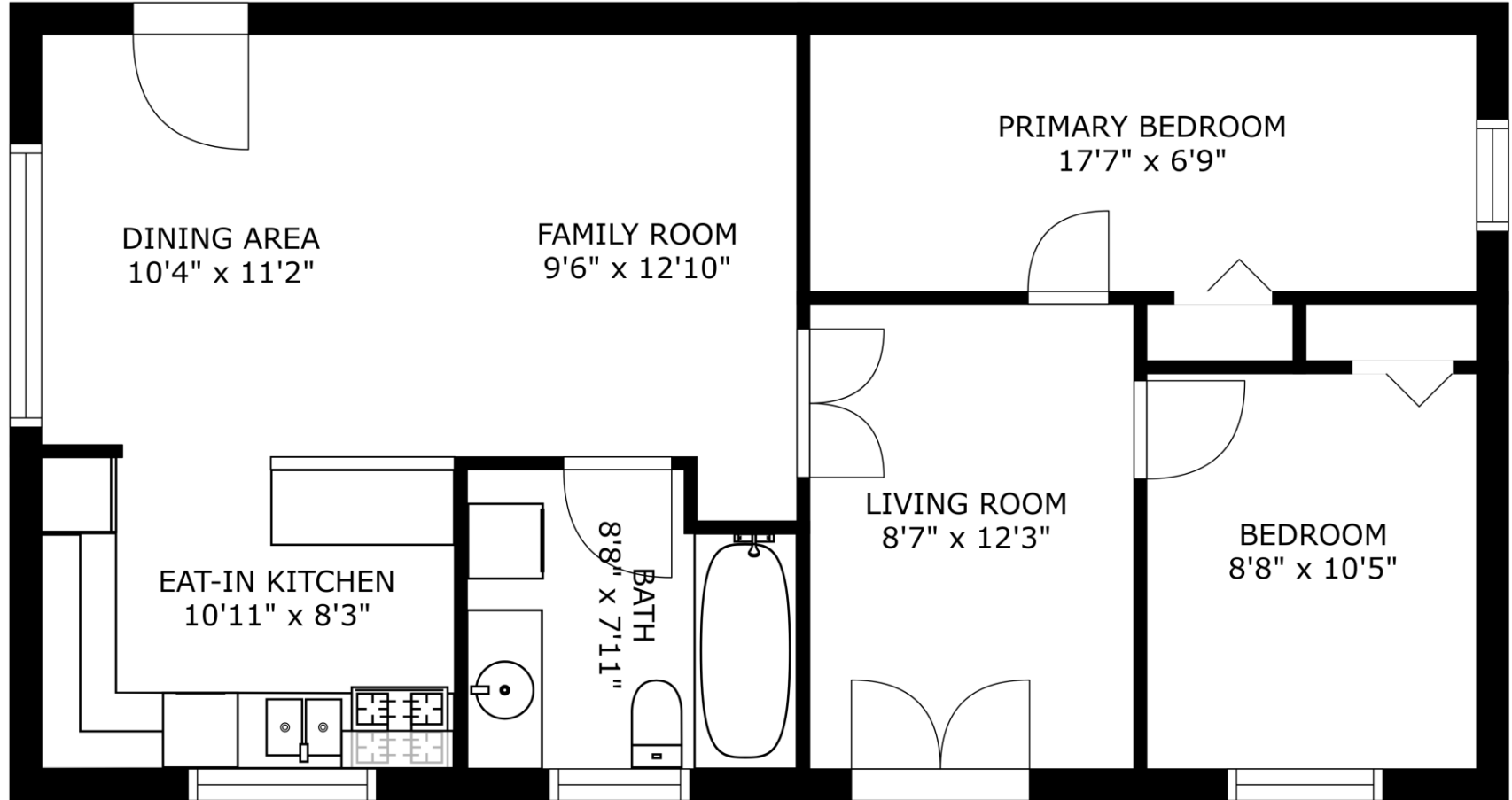


Apartment 2

- 1 bed, 1 bath
- Studio style
- 1-car attached garage

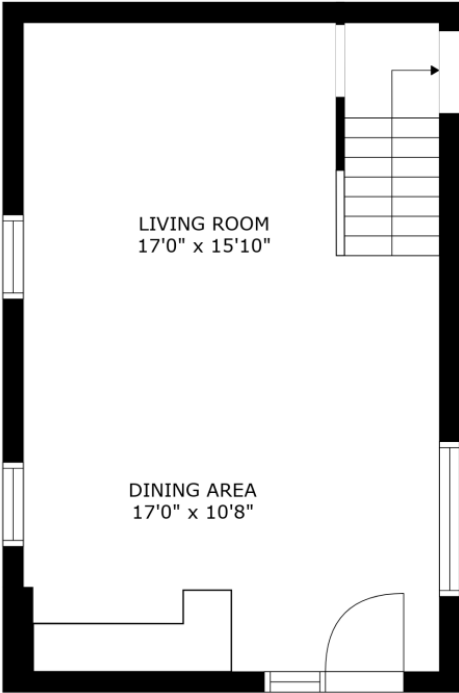


Floor plan of Apartment 1

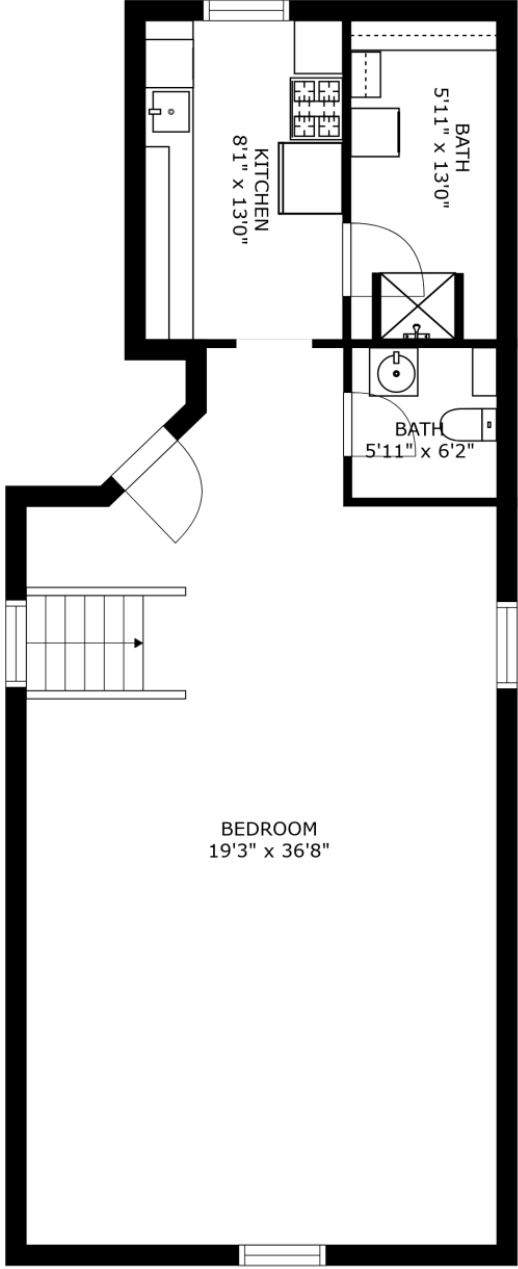


FLOOR 1

Floor Plan of Apartment 2



FLOOR 1



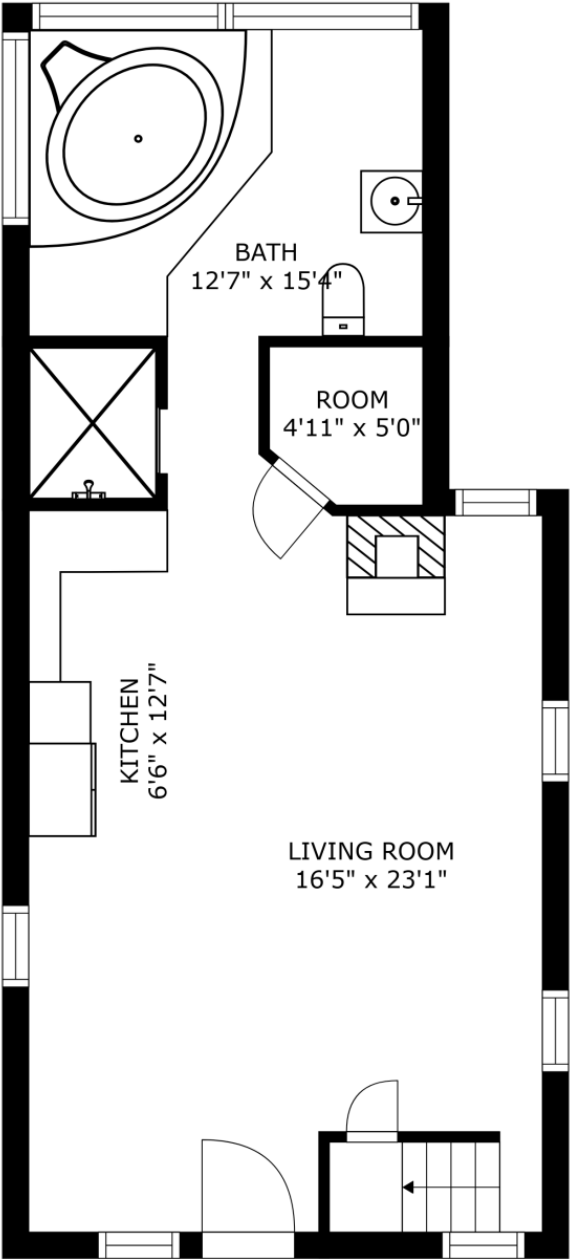
FLOOR 2

Rose Cottage

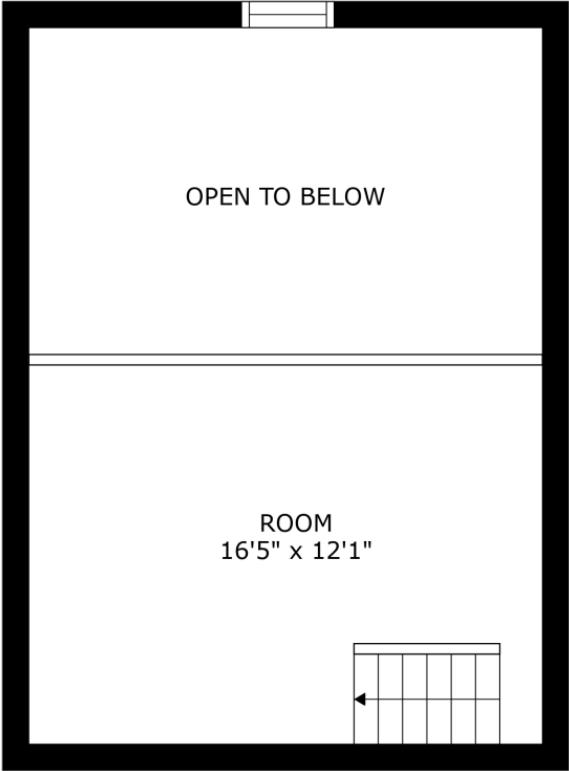
- Built in 1905, remodeled in 1998
- 642 sq ft
- Studio apartment with bedroom loft
- Used to be a garage, then gift shop with ½ bath
- Currently with a ¾ bath and a kitchenette
- New roof in 2013



Floor Plan of Rose Cottage



FLOOR 1



FLOOR 2

Garage/Studio

- Framed with brick veneer (to match mansion)
- Constructed in 2015, approx. 2,000 sq ft
- 3 garage bays
- Turreted Studio with loft and ½ bathroom
- Machine shop/woodshop on in rear
- Heated and plumbed (attached to mansion septic)

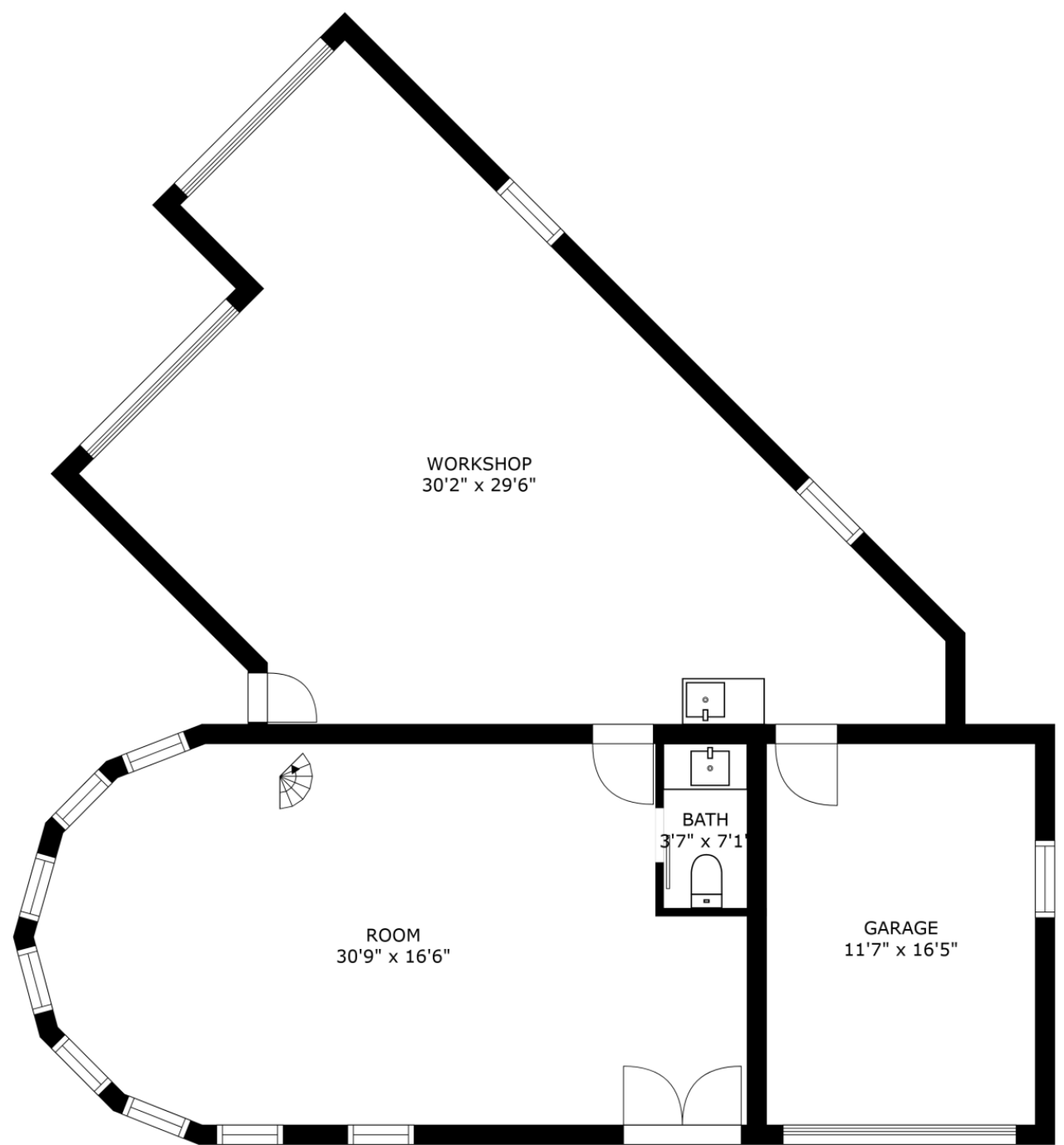


Garage/Studio

- Art studio with ½ bath and loft
- Machine shop/woodshop with 3 garage bays



Floor Plan of Garage and Studio



Greenhouse

- 2,304 sq ft
- Fully functional gas heater, evaporative cooler/humidifying system
- Originally a commercial herb operation



Morton Steel Building

- Constructed in 2017
- 1,200 sq ft equipment storage
- Additional mezzanine storage area
- Electrical service

